

INSTALLATION

Tools Required:

Flat Screwdriver
Super glue (optional)

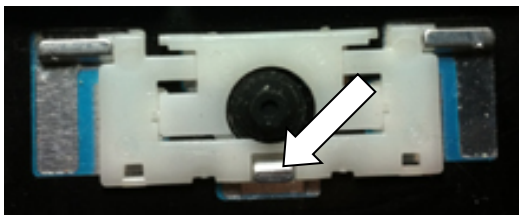
Time to install: 1-2 minutes

Step One – Verify all materials are included.

Be sure your purchase contains the materials you've requested. This should include the key cap itself, the hinge mechanism and a rubber cup (optional) which will be under the key when install is finished.



Step Two – Separate hinge mechanism from key cap and begin installation.

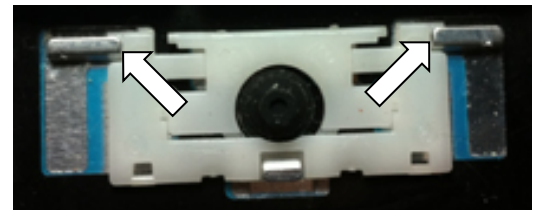


Hinges are pre-attached to each key for protection during shipping and must be removed to install. Take note of the orientation of the hinge mechanism to help you with placement.

NOTE: Please use caution when separating the pieces, as they are very fragile! To install the hinge mechanism, begin by hooking one end over the protruding metal tab located on the keyboard. A small flat screwdriver or blunt faced tweezers will assist you in this step. Be sure to keep the flattest side of the hinge facing up to properly receive the key cap.

Step Three – Complete hinge mechanism install.

Hook the other ends of the hinge mechanism over the alternate tabs and it will lock into place. Be careful with this step, as forcing the hinge or placing too much stress on the hinge may cause it to break.



Step Four – Install rubber cup (optional) and press key cap into place.

With the hinge now properly installed, you can place the optional rubber cup if needed. Apply a small amount of glue around the OUTER rim of the cup and seat it in the center of the hinge assembly. Sometimes the rubber cup will firmly sit in place by itself, but it is better to use adhesive.

Allow ample drying time before installing the key cap!

Some key caps have metal bars that must first be placed into their corresponding holes in the brackets attached to the keyboard. You can then simply place the correctly oriented key cap over the hinge mechanism and press down.

If the key cap clicks into place, you're all done!



uikfix Laptop Keyboard Keys